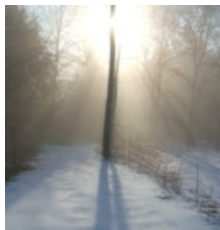




WOOLMAN HILL 2013-2014 SEASON PREVIEW



WOOLMAN HILL
Quaker Retreat Center

www.woolmanhill.org
info@woolmanhill.org
[www.Facebook.com/
WoolmanHill](http://www.Facebook.com/WoolmanHill)
107 Keets Road
Deerfield MA 01342
413-774-3431



CRACKED OPEN

Going deeper into the why, what and how of our Quaker practice
Segment Two: Discernment

Jointly offered by NEYM Ministry & Counsel, Quaker Studies Program and Woolman Hill, this series of weekend workshops and on-line courses will focus this year on Quaker discernment. For more information: www.neym.org/m-c.

CORPORATE DISCERNMENT IN MEETING FOR BUSINESS

Nancy & David Haines
January 17-19, 2014



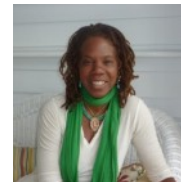
NOTICING GOD'S NUDGES IN OUR LIVES: THE SACRED ART OF INDIVIDUAL SPIRITUAL DISCERNMENT

Nancy Bieber
March 28-30, 2014



* * * * *

JOURNEY TOWARD AN UNDIVIDED LIFE
Part Two: Embracing the Power of Paradox
with Valerie Brown
October 24-27, 2013



EXPERIMENTS IN HOLY CONVERSATION
Part of the "Cracked Open" Series Part One: Worship
With Betsy Blake & Sadie Forsythe
November 1-3, 2013 (New dates!)



WINTER SILENCE Retreat
Facilitator tba
December 27-30, 2013

MINDFUL MORTALITY
with Rob Spencer
February 28-March 2, 2014



WRITING OUT OF THE PRESENCE
with Ellen Michaud
March 13-16, 2014



COUPLE ENRICHMENT
with Mary Kay Glazer & Mark Moss, Carol & Peter Letson
April 4-6, 2014



SUMMER SOLSTICE Retreat
Facilitators tba
June 19-22, 2014

